



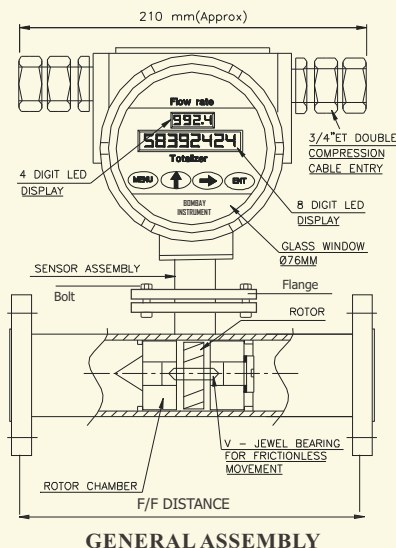
## Turbine Flowmeter With Field Mounted Flow Rate Indicator Totalizer ,4-20 mA output Transmitter and Batcher

Bombay Instrument Turbine Flow Meters are useful for liquids & gases in general industrial application. They provide excellent performance with quality & reliability. Suitable for as hygienic application. The flowing media engages a vaned rotor causing it to rotate at an angular velocity proportional to flow rate. The pick-up coil senses the spinning motion of the rotor inside the pipe & converts it into a pulsating electrical signal. Summation of the pulsating electrical signal is directly related to the total flow. The frequency is linearly proportional to flow rate.

**Product Code : BITFB-11**

### Suitable for :

- Fluid : Clear Liquids & Gases
- Viscosity : Up to 20 cp
- Pressure : Up to 40 Kg/cm<sup>2</sup>
- Measuring Range : 0.18 to 750M<sup>3</sup>/hr of Water /Clear Liquid  
0.5 to 2200 Nm<sup>3</sup>/hr of Air/Gas at NTP
- Line Size : 6 NB to 200 NB
- Available Materials: SS304/SS304L/SS316/SS316L
- Connection : Flanged to ASA/BS/DIN/ Triclover Standard  
Screwed to BSP/NPT(M/F)
- Accuracy : ±1% of FSD & ±0.5% on request
- Density / Sp. Gravity : Up to 2.95
- Temperature : Up to 250° C
- Power Supply : 24 VDC Isolated
- Flow Rate Display : 4 Digit LED
- Totaliser Display : 8 Digit LED
- Programing : By mamberance Keys
- Transmitter : 4-20mAmp out put optically Isolated
- Relay Out put : Potential free contact
- Relay Rating : 5 Amp/ 230 VAC



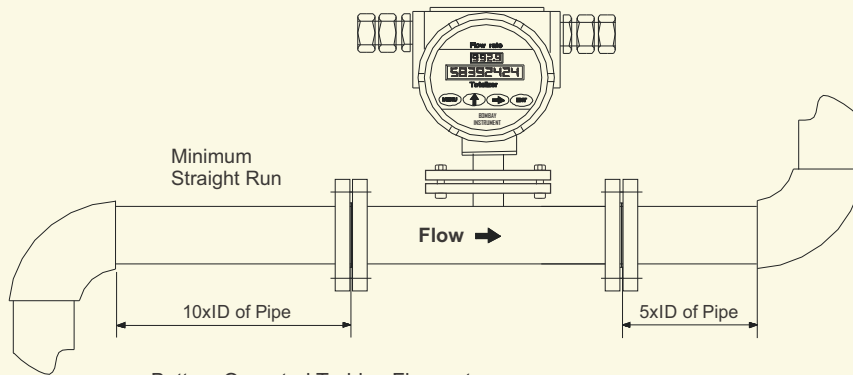
### Turbine Flow Meter Parts

P. No.	Description	Materials
1	Bearings Bush	Tungsten Carbide / Stellite / Ball Bearing for Gases
2	Rate Total Electronic Module	Flame Proof CMRI Certified to Gas Group II A , IIB
3	Magnetic Pick Off Coil Sensor	Stainless Steel
4	Stopper	AISI 304 / 316 / 316 L
5	Meter Body	AISI 304 / 316 / 316 L
6	Shaft	Tungsten Carbide / Stellite
7	Turbine Shaft Screw	AISI 304 / 316
8	Washer	PTFE
9	Turbine Rotor	AISI 410 / 430
10	Rotor Chamber	AISI 304 / 316 / 316 L
11	Circlip	AISI 304 / 316
12	Electronic Module Mounting Flange	
13	Nut Bolts to remove/replace electronic Module	

## Flow Range in M<sup>3</sup>/hr

Line Size NB	6	15	20	25	40	50	80	100	150	200
Liquid Flow	0.18	0.22	0.6	1	2.5	4.5	9	18	35	75
	1.8	2.2	6	10	25	45	90	180	350	750
Gas Flow	0.5	0.88	3.2	6.4	7	15	30	55	100	220
	5.5	6.60	24	48	70	150	300	550	1000	2200
F/F Distance	175	175	175	175	175	175	250	250	250	285
Net Weight in Kg.	3	4	4	5	6	8	12	13	26	34

### Mounting



Battery Operated Turbine Flowmeter  
With Field Mounted Flow Rate Indicator & Totalizer

### Manufactured & Marketed By :

**M/S. Bombay Instrument Mfg. Co.**

SHOP NO. 5 , 50/86, JITEKAR WADI  
OPP. VINAY HOTEL 88, THAKURDWAR ROAD MUMBAI – 400 002 - INDIA  
Tel. : 91 (022) 2389 1073 / 2389 10 7 5  
Fax : 91 (022) 2389 1075  
Web. : [www.bombayinstrument.in](http://www.bombayinstrument.in)  
Email : [bimco@mtnl.net.in](mailto:bimco@mtnl.net.in) , [bimcoindia@gmail.com](mailto:bimcoindia@gmail.com)