

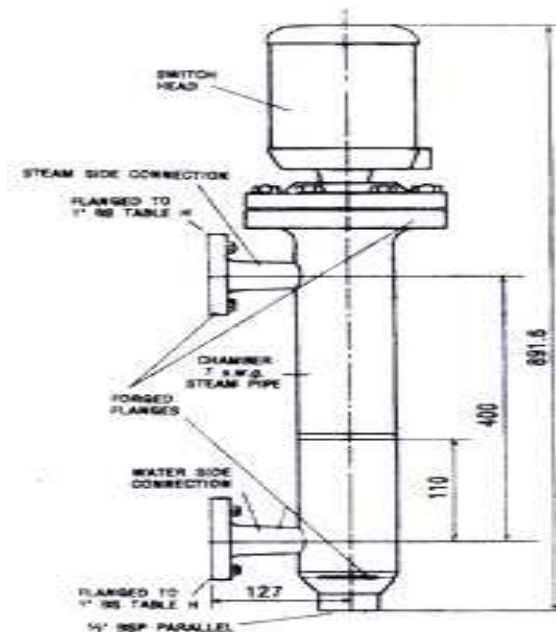
**BOMBAY INSTRUMENT MFG. CO.**

AN ISO 9001:2015 CERTIFIED COMPANY

We manufacture complete range of boiler and burner spares suitable for IAEC, THERMAX, NESTLER, STERLING, TRANSPERANT, etc. type.

**AIR BREAK VERTICAL CONTROLS - MOBRAY DUAL CONTROL**

A comprehensive range of magnetically-operated controls of the vertical type in float chambers for external mounting on steam boilers are pressure vessels. They are designed to meet all requirements for automatic on/off control of boiler feed pump, burner cut-out high and/or low level alarm or a combination of these.



**MODEL NO: MOB-SW**

Type	Centre to Centre distance of side flanges	Max. Working Pressure	Chamber Connection		Blow Down Connection	No. of switches	Type No.
			Steam	Water			
Side & Side	400 mm	250 psig (17.5 kg/cm sq)	Side (Holes)	Side (Holes)	1/2" BSP	TWO	400-6253-7376
Side & Side	400 mm	350 psig (24.6 kg/cm sq)	Side (Holes)	Side (Holes)	1/2" BSP	TWO	5783-6253-7376
Side & Side	216 mm	250 psig (17.5 kg/cm sq)	Side (Holes)	Side (Holes)	1/2" BSP	TWO	216-6253-7376
Side & Side	295 mm	250 psig (17.5 kg/cm sq)	Side (Holes)	Side (Holes)	1/2" BSP	TWO	295-6253-7376
Side & Side	300 mm	250 psig (17.5 kg/cm sq)	Side (Holes)	Side (Holes)	1/2" BSP	TWO	300-6253-7376
Side & Bottom	–	250 psig (17.5 kg/cm sq)	Side (Holes)	Bottom (Holes)	–	TWO	5742-6253-7374
Top Mounted	–	250 psig (17.5 kg/cm sq)	–	–	–	TWO	TOP-6253-7376

**Manufactured & Marketed By :**  
**M/S. Bombay Instrument Mfg. Co.**

SHOP NO. 5 , 50/86, JITEKAR WADI  
 OPP. VINAY HOTEL 88, THAKURDWAR ROAD MUMBAI – 400 002 - INDIA  
 Tel. : 91 (022) 2389 1073 / 2389 10 7 5  
 Fax : 91 (022) 2389 1075  
 Web. : [www.bombayinstrument.in](http://www.bombayinstrument.in)  
 Email : [bimco@mtnl.net.in](mailto:bimco@mtnl.net.in) , [bimcoindia@gmail.com](mailto:bimcoindia@gmail.com)